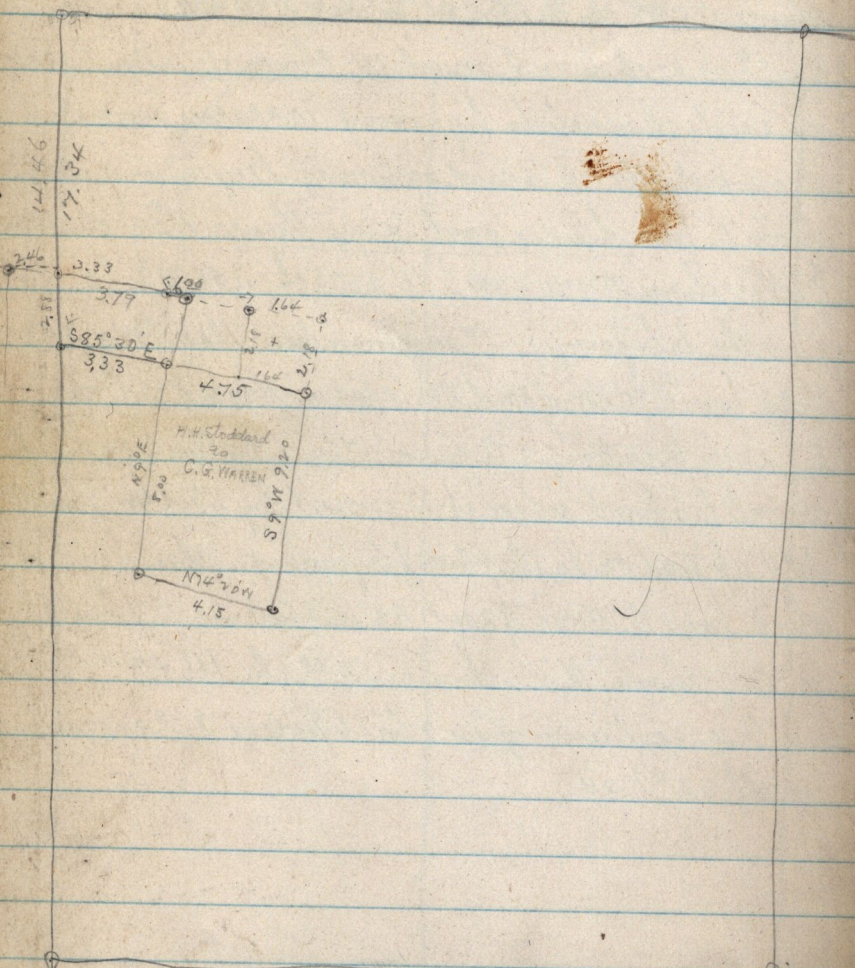


January 12-1885- Survey at Uintah-

N. E. 1/4 Sec 26 T5 N R1W



To be conveyed by Corps to Claudius Lambert Warner

beginning 14.34 ch S, and 8.00 ch  $S88^{\circ}30'E$  from N.W. cor. N.E. 1/4

Sec 26 T5 N R1W thence  $N9^{\circ}E$ , 2.15 ch  $N85^{\circ}30'W$ , 1.64 ch

$S9^{\circ}W$ , 2.19 ch  $S45^{\circ}30'E$ , 1.64 ch to loc. 36